

HOW TO SCREED

D.I.Y

Tiling Fact Sheet



Preparation of shower floor:

The first step is to prepare the floor.

Step one: Cut a piece of industrial plastic and fit this tightly inside the hob area.



Cut a piece of industrial plastic



Fit tightly inside the hob area



Cut a waste hole

Step two: Cut a waste hole into the plastic.



measure and cut expanding metal

Step three: Expanding metal will hold the screed to the floor. Measure the size of the shower floor and then using tin snips, cut the expanding metal to size **Safety: Wear gloves as it can be sharp!**



Place metal sheeting down

Step four: Place a few small pieces of tile under the sheeting to lift the sheeting up a little. This will allow the mortar to curl under the metal sheeting and will help hold your screed to the floor.



clout nails to hold the expanding metal sheeting to the floor

Step five: Use clout nails to hold the expanding metal sheeting to the floor.



Overlap joins by 50mm

Step six: If you have a joint, overlap the edges by about 50mm.



Cut a hole for the waste

Step seven: Cut a hole for the waste.



Nail in every 150mm

Step eight: Nail down mesh every 150mm across the entire shower base. Once that's done, the shower base is ready for the Screed.

HOW TO SCREED

D.I.Y

Tiling Fact Sheet



Creating the fall:

When making a shower base, you want the water to flow evenly down to the drain. Do this by making the drain lower than the outside edge of the shower base. This is called the fall. Create the fall with the screed.

In order to make the fall regulation of 1 to 60 our waste pipe height must be a minimum of 20mm above the metal sheeting, and the screed at the outside edge must be at least 35mm above the metal sheeting.



WHAT YOU WILL NEED TO SCREED:

PREMIX SCREED & WATER



WHEEL BARROR OR BUCKET



TROWEL



STRAIGHT EDGE & LEVEL



SCREEDING RODS



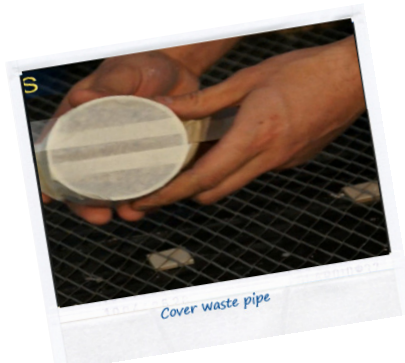
timber batons that you can make

MASKING TAPE



Cover the waste pipe:

Remove the waste cover and tape up the 20mm waste pipe. This will prevent any screed going down the drain.



Marking the starting point:

Mark the hob at 35mm, measuring from the high points of the metal sheeting.



HOW TO SCREED

D.I.Y

Tiling Fact Sheet



Purchase premix screed

For the correct ratio of sand and cement and to save some time, purchase premixed screed from any National Tiles store. Screed is another word for mortar mix.

Prepare screed mix:

Use a wheelbarrow and a shovel to mix, pour the water in then add the premix screed. Mix together making sure there are no dry lumps. Always follow the manufacture instructions.



Using screed rods:

Use your screed rods as a guide to ensure that you get the fall correct and to the desired measurement. Make an outside ridge with your screed mix to the 35mm mark. Tap the screed rods in so they are level.

Check the fall of the floor:

The screed rods and waste cap will be your guide for the fall. Double check the fall using your level. By following this method you are ensuring you will get the fall right.

Applying Screed:

Tip the remaining screed mix into the shower area. Spread out evenly 5mm above screeding rods allowing for cutting down and press firmly with a trowel to fill in any air pockets. Using a timber straight edge, place one hand over the screeding rod and the other over the waste cap, Jiggle the straight edge back and forth to cut the excess screed mix back.

Remove screed rods from channels and fill in any little holes, using the float and extra screeding mix to achieve a flat and smooth surface.



National Tiles Tips:

- Clean your tools after screeding.
- Shower area fall ratio - 1:60 = every 600mm across, go down 10mm
- For drying times check the back of the packet.